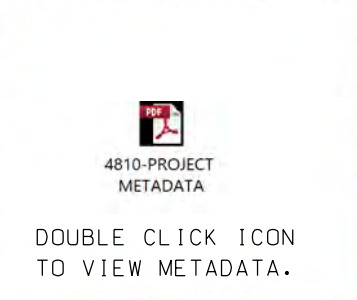


NSRS CONTROL DATA	
BENCHMARK:	P 38 (PID: K40333)
ELEVATION:	21.93' NAVD 1988
LOCAL CONTROL DATA	
BENCHMARK:	NBAY 2
ELEVATION:	7.42' NAVD 1988



PROJECT SPECIFIC NOTES:

- THE INFORMATION DEPICTED ON THIS MAP REPRESENTS THE RESULTS OF SURVEYS MADE ON THE DATES INDICATED AND CAN ONLY BE CONSIDERED AS THE GENERAL CONDITIONS EXISTING AT THAT TIME.
- THE SOUNDINGS ON THIS MAP MEET EM 1110-2-1003 ACCURACY STANDARDS.
- COORDINATES REFER TO US STATE PLANE COORDINATE SYSTEM NAD 1983.
- NEW JERSEY MERCATOR - ZONE 2000 - US SURVEY FEET.
- SOUNDINGS ON THIS MAP REFER TO THE PLANE OF MEAN LOWER LOW WATER (MLLW) [EPDCH 1983-2001].
- MEAN LOWER LOW WATER IS 2.9-3.0 FEET BELOW NAVD88 AS DETERMINED USING VDATUM EVER, 3.01.
- SOUNDINGS DEPICTED ON THIS MAP ARE BASED ON A 3'x3' MEDIUM CELL, SORTED TO A 30' INTERVAL.
- CONTOURS ON THIS MAP WERE GENERATED USING THE 3'x3' MEDIUM DATA SET.
- THE DATA DEPICTED ON THIS MAP SHOULD NOT BE USED FOR VOLUME CALCULATION PURPOSES.
- AERIAL IMAGERY PROVIDED BY NJGIN 2015.
- THE PLANIMETRICS DEPICTED ON THIS MAP ARE FOR ORIENTATION PURPOSES ONLY.
- THIS SURVEY WAS PERFORMED USING REAL TIME KINEMATIC GPS FROM THE NYDOT NETWORK.
- THIS MAP IS CEPD COMPLIANT IN ACCORDANCE WITH ER 1110-2-8160 AND EM 1110-2-6056.

DATE OF SURVEY:	28 FEB. 2019
SCALE:	ONE INCH = 100 FEET
FIELD BOOKS:	FILE NO. 1 1001 REEL NO. 1 48101

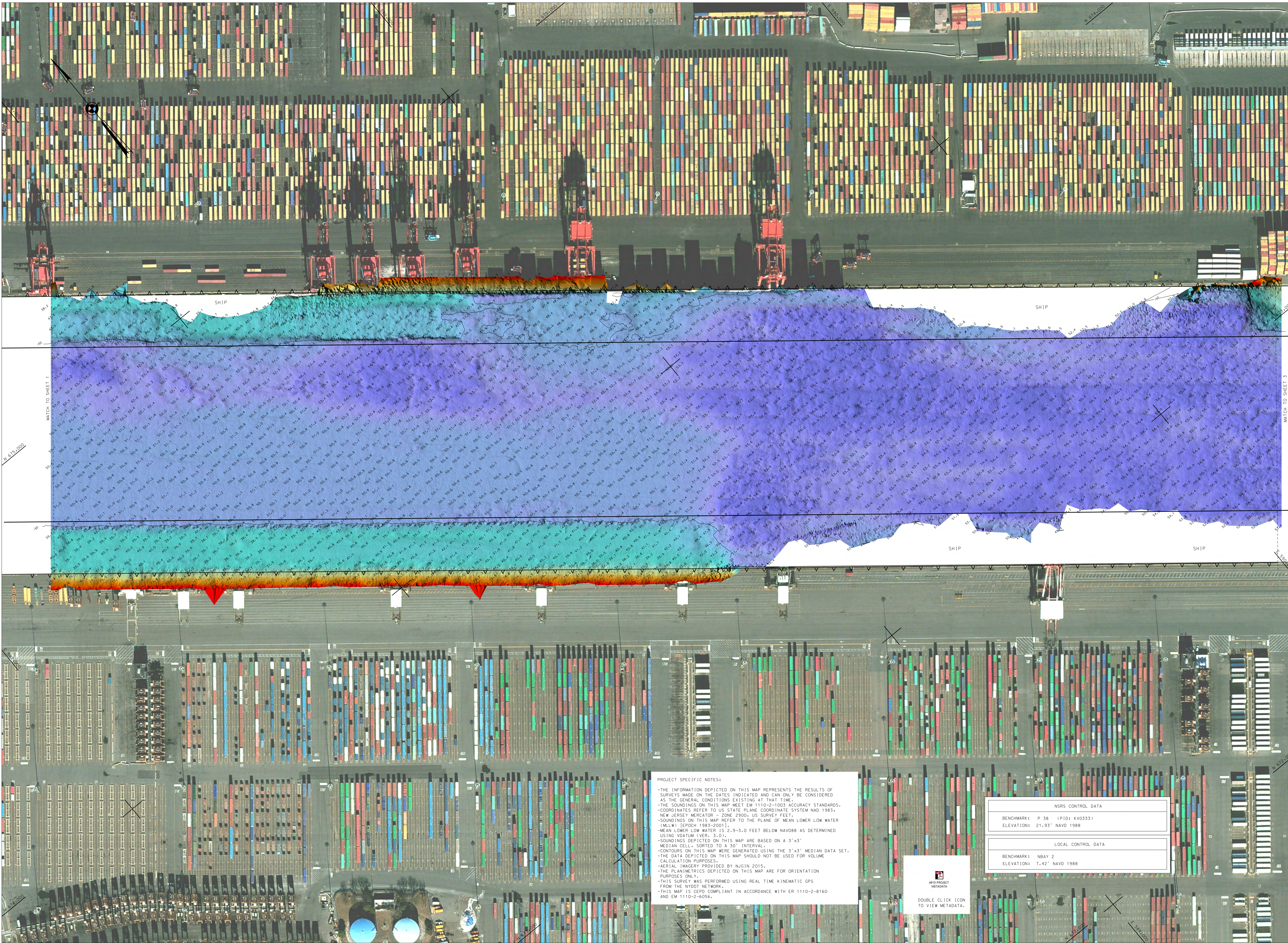
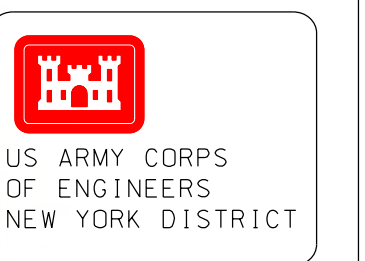
APPROVED:	J. BERTOLDI DATE: 28 FEB 2019
APPROVED:	M. FORTE DATE: 28 FEB 2019
APPROVED:	D. CLARKE DATE: 28 FEB 2019
APPROVED:	J. MARZ DATE: 28 FEB 2019

DEPARTMENT OF THE ARMY  
NEW YORK DISTRICT  
OPERATIONS DIVISION  
SURVEY SECTION  
NEW YORK, NEW YORK 10278  
CENNA-OPS

NEW JERSEY  
PORT ELIZABETH CHANNEL  
CONDITION SURVEY

NEWARK BAY, HACKENSACK & PASSAIC RIVERS





FILE NO. 1003	PROJECT NO. 143101
DATE: 28 FEB 2019	PR: ESD/JHS

SCALES:	DATE OF SURVEY:
ONE INCH = 100 FEET	28 FEB - 2019
FIELD BOOKS:	FILE NO.: 1003
	PROJECT NO.: 143101

APPROVED: J. BERTELOTTI	DATE: 28 MAR 2019
APPROVED: M. EGGIE	
APPROVED: D. CLORKE	

DEPARTMENT OF THE ARMY  
 NEW YORK DISTRICT  
 OPERATIONS DIVISION  
 NEW YORK, NEW YORK 10278  
 SUBDIVISION ON  
 CANALS

NEWARK BAY-HACKENSACK & PASSAIC RIVERS  
 PORT ELIZABETH CHANNEL  
 CONDITION SURVEY

VH-102  
 SHEET 2 OF 3

**PROJECT SPECIFIC NOTES:**

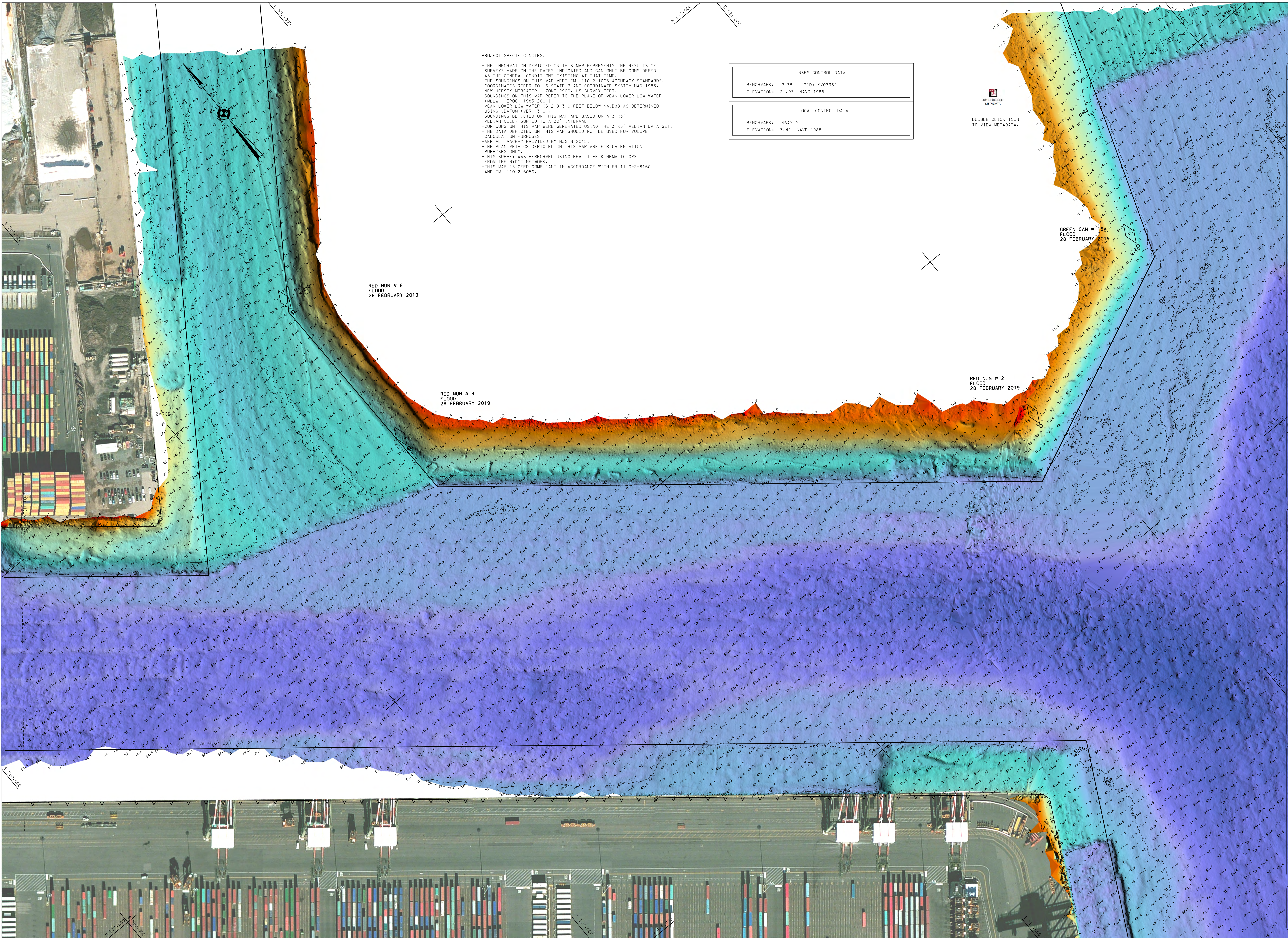
- THE INFORMATION DEPICTED ON THIS MAP REPRESENTS THE RESULTS OF SURVEYS MADE ON THE DATES INDICATED AND CAN ONLY BE CONSIDERED AS THE GENERAL CONDITIONS EXISTING AT THAT TIME.
- THE SOUNDINGS ON THIS MAP MEET EM 1110-2-1003 ACCURACY STANDARDS.
- COORDINATES REFER TO US STATE PLANE COORDINATE SYSTEM NAD 1983, NEW JERSEY MERCATOR, ZONE 2900, US SURVEY FEET.
- SOUNDINGS ON THIS MAP REFER TO THE PLANE OF MEAN LOWER LOW WATER (MLLW) [EPDCH 1983-2001].
- MEAN LOWER LOW WATER IS 2.9-3.0 FEET BELOW NAVD88 AS DETERMINED USING VDATIM LEVEL -3.01.
- SOUNDINGS DEPICTED ON THIS MAP ARE BASED ON A 3'x3' MEDIAN CELL, SORTED TO A 30' INTERVAL.
- CONTOURS ON THIS MAP WERE GENERATED USING THE 3'x3' MEDIAN DATA SET.
- THE DATA DEPICTED ON THIS MAP SHOULD NOT BE USED FOR VOLUME CALCULATION PURPOSES.
- AERIAL IMAGERY PROVIDED BY NJGIN 2015.
- THE PLANIMETRICS DEPICTED ON THIS MAP ARE FOR ORIENTATION PURPOSES ONLY.
- THIS SURVEY WAS PERFORMED USING REAL TIME KINEMATIC GPS FROM THE NAVD88 NETWORK.
- THIS MAP IS CERD COMPLIANT IN ACCORDANCE WITH ER 1110-2-8160 AND EM 1110-2-6056.

NSRS CONTROL DATA	
BENCHMARK: P 38 (PID: KV0333)	
ELEVATION: 21.93' NAVD 1988	
LOCAL CONTROL DATA	
BENCHMARK: NBAY 2	
ELEVATION: 7.42' NAVD 1988	



DOUBLE CLICK ICON TO VIEW METADATA.





PROJECT SPECIFIC NOTES:

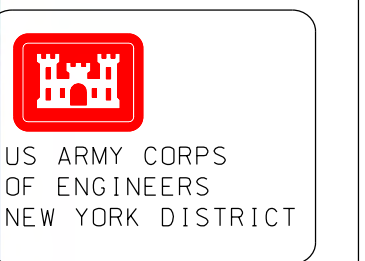
- THE INFORMATION DEPICTED ON THIS MAP REPRESENTS THE RESULTS OF SURVEYS MADE ON THE DATES INDICATED AND CAN ONLY BE CONSIDERED AS THE GENERAL CONDITIONS EXISTING AT THAT TIME.
- THE SOUNDINGS ON THIS MAP MEET EM 1110-2-1003 ACCURACY STANDARDS.
- COORDINATES REFER TO US STATE PLANE COORDINATE SYSTEM NAD 1983, NEW JERSEY MERCATOR - ZONE 2000, US SURVEY FEET.
- SOUNDINGS ON THIS MAP REFER TO THE PLANE OF MEAN LOWER LOW WATER (MLLW) [EPDCH 1989-2001].
- MEAN LOWER LOW WATER IS 2.9-3.0 FEET BELOW NAVD88 AS DETERMINED USING VDATUM (VER. 3.0).
- SOUNDINGS DEPICTED ON THIS MAP ARE BASED ON A 3'x3' MEDIAN CELL, SORTED TO A 30' INTERVAL.
- CONTOURS ON THIS MAP WERE GENERATED USING THE 3'x3' MEDIAN DATA SET.
- THE DATA DEPICTED ON THIS MAP SHOULD NOT BE USED FOR VOLUME CALCULATION PURPOSES.
- AERIAL IMAGERY PROVIDED BY NJGIN 2015.
- THE PLANIMETRICS DEPICTED ON THIS MAP ARE FOR ORIENTATION PURPOSES ONLY.
- THIS SURVEY WAS PERFORMED USING REAL TIME KINEMATIC GPS FROM THE NVDOT NETWORK.
- THIS MAP IS CEPD COMPLIANT IN ACCORDANCE WITH ER 1110-2-8160 AND EM 1110-2-6056.

NSRS CONTROL DATA	
BENCHMARK:	P 38 (PID: KV0333)
ELEVATION:	21.93' NAVD 1988

LOCAL CONTROL DATA	
BENCHMARK:	NBAY 2
ELEVATION:	7.42' NAVD 1988

DOUBLE CLICK ICON TO VIEW METADATA.



FILE NO.:	1003
REVISION NO.:	01
DATE:	28 FEB 2019
DESIGNED BY:	ESD/JHS
DRAWN BY:	
CHECKED BY:	
APPROVED BY:	

SCALE:	ONE INCH = 100 FEET
FIELD BOOKS:	
DATES OF SURVEY:	28 FEB. 2019
FILE NO.:	1003
REVISION NO.:	01

APPROVED:	J. BERGLDOTTI	DATE:	28 FEB 2019
APPROVED:	M. EDGIE	DATE:	
APPROVED:	D. CLARKE	DATE:	
APPROVED:	J. WRAZ	DATE:	

DEPARTMENT OF THE ARMY  
 CORPS OF ENGINEERS  
 NEW YORK, NEW YORK 10278

OPERATIONS DIVISION  
 SURVEYING SECTION  
 CENNA-COS

NEWARK BAY, HACKENSACK & PASSAIC RIVERS  
 NEW JERSEY  
 PORT ELIZABETH CHANNEL  
 CONDITION SURVEY

VH-103  
 SHEET 3 OF 3